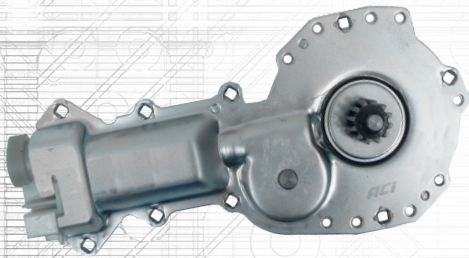


# QUALITY ADVANTAGE WINDOW LIFT MOTORS

## O.E. FIT, FORM & FUNCTION DEPENDABLE QUALITY

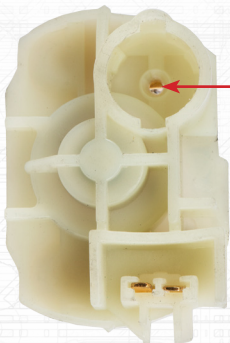


### ACI® Power Window Motor p/n 82458

Window lift motors are involved in the everyday use of a vehicle. Throughout its lifetime, it's subjected to extreme conditions in harsh environments. For this reason, ACI® designs quality units that begin with a comparison to the O.E. as a baseline for fit, form and function. Field research uncovers unique improvement opportunities that eliminate known inherent weaknesses.

## THE ACI® DIFFERENCE

### BRUSH HOLDER - OUTSIDE

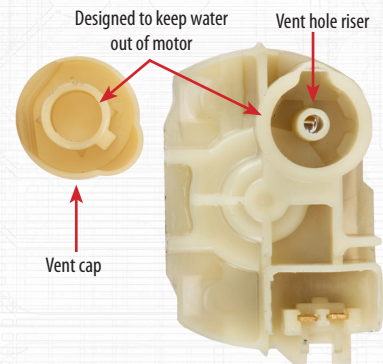


#### COMPETITOR UNIT

The competitor brush holder will funnel water into the motor causing rust, corrosion and premature failure.

#### ACI® UNIT

The ACI® brush holder is GM's latest design with a revised vent hole and water entry prevention.

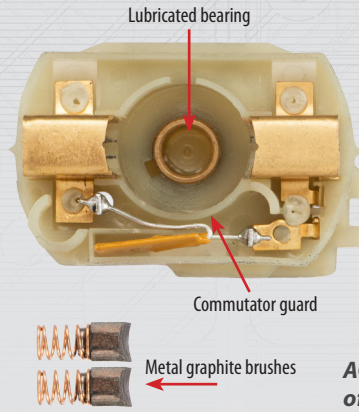
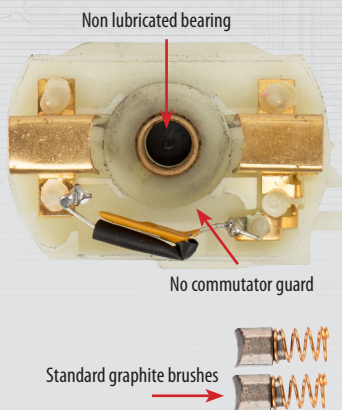


### BRUSH HOLDER - INSIDE

#### COMPETITOR UNIT

The competitor unit visibly shows lack of lubrication on the armature shaft and thrust bearing. This can result in premature failure.

Their brush holder design allows the circuit breaker to make direct contact with the commutator. This can result in shortening and motor failure.



#### ACI® UNIT

The ACI® unit is thoroughly lubricated for increased performance and durability.

A special pocket design protects the commutator and circuit breaker from making contact.

**ACI® motors are tested to 15 years of simulated real world use!**

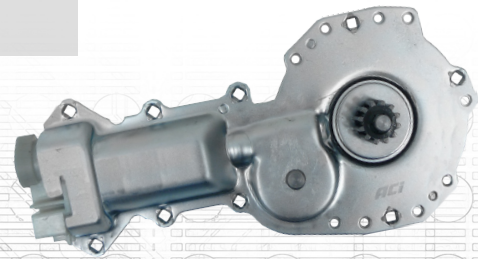


# O.E. FIT, FORM & FUNCTION DEPENDABLE QUALITY

## THE ACI® DIFFERENCE CONTINUED

### ACI® Power Window Motor p/n 82458

#### ARMATURE & BEARING

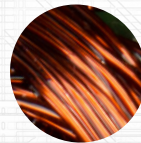


#### ACI® UNIT

ACI® designed this unit with a 25% increase in torque and speed over the competitor. This means a more efficient motor to quickly power window operation.

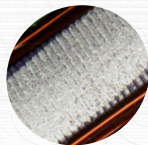
#### Clutch Spring

ACI® utilizes a larger spring wire which is critical to prevent the motor from reversing when power is off.



#### Wire

Larger wire diameter for increased torque

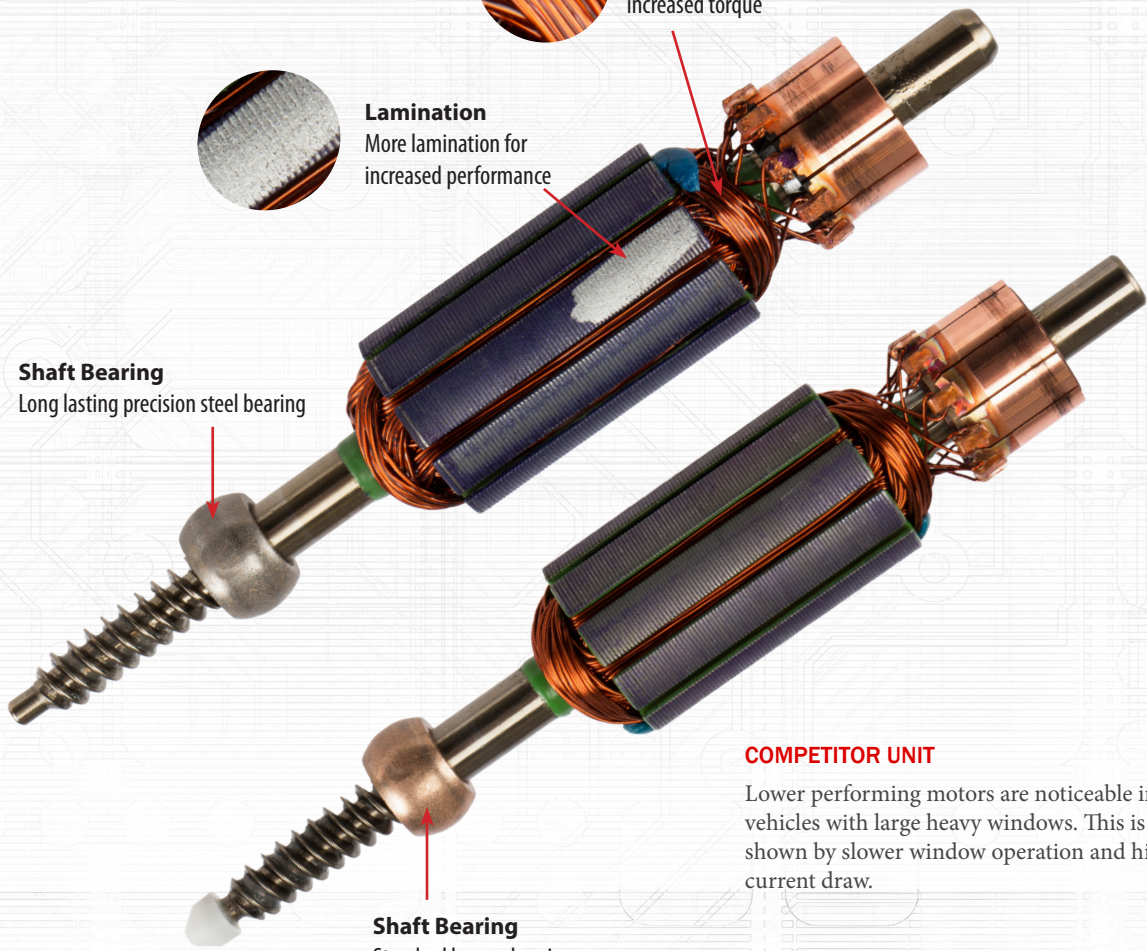


#### Lamination

More lamination for increased performance

#### Shaft Bearing

Long lasting precision steel bearing



#### COMPETITOR UNIT

Lower performing motors are noticeable in vehicles with large heavy windows. This is shown by slower window operation and high current draw.

#### Shaft Bearing

Standard bronze bearing