

**ACI Has Quality Parts That
Are Right For You!**

History of ACI®

ACI®, established nearly 40 years ago, is a pioneer in the development of Automotive Windshield Washer Pumps and Power Window Motors for the OE and Automotive Aftermarket. During this time, ACI® has established itself as the industry leader in providing the most complete product offering combined with the best in class quality available in the market today.

Located in Grapevine, Texas, ACI® continues to manufacture many of the motors and washer pumps in its US manufacturing facility for distribution to both domestic and international markets. Our Strategic decision to supply exact fit products combined with an intensive product validation process has allowed ACI® to maintain its position as the industry leader in this product category.

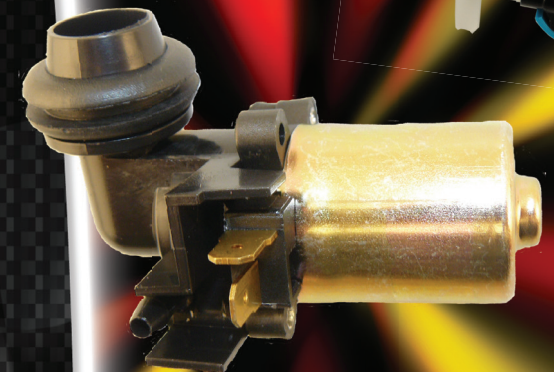
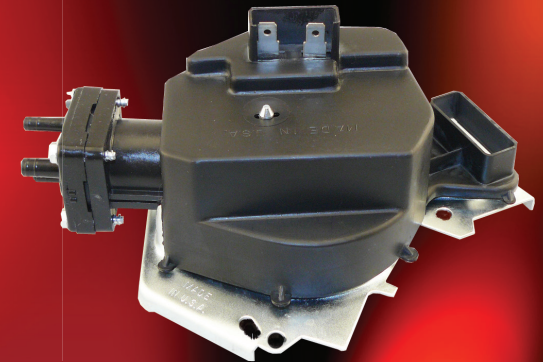
**Count on ACI® for
"QUALITY PRODUCTS - OE PERFORMANCE"**



1801 Waters Ridge Dr • Lewisville, TX 75057
1-888-505-4567 • www.aciauto.com



QUALITY PRODUCTS - OE PERFORMANCE



**Exact Fit Washer
Pump**

**Exact Fit
Washer Pump**

**Exact Fit Pulse
Module**

**Reservoir and
System Universal
Washer Pump**

Windshield Washer Products



Why You Need a Quality ACI Washer Pump!

- Toughened and Low Friction Plastics
- OE Style Connector
- Ease of Installation

Washer Pump Trouble Shooting Tips

All ACI washer pump products are designed to be exact replacements for the components that your vehicle was originally equipped with from the factory.

The following Trouble Shooting Guide should be helpful if you encounter any problems after you have installed our products.

No washer fluid flow from nozzles, can hear pump running.

- 1) Reservoir empty. Fill to proper level with correct windshield washer solution.
- 2) Inspect hoses for cracks, breaks, and deterioration.
- 3) Checked for clogged or restricted nozzles, hoses, or pump inlet.
- 4) If you can hear pump running, replace pump and seal.

No washer fluid flow from nozzles, cannot hear pump running.

- 1) Washer solvent is frozen. Always use the correct washer solvent for your climate.
- 2) Check the washer pump electrical connector for voltage. If there is proper voltage (10-14 volts) at the pump, replace the pump and seal.
- 3) Blown fuse, check fuse and replace as necessary.
- 4) Inspect switch, check wiring for any signs of fraying or loose connections.

Low washer fluid flow from nozzles

- 1) Washer solvent is frozen. Always use the correct washer solvent for your climate.
- 2) Check for clogged or restricted nozzle, hoses, or pump inlet.
- 3) Inspect hoses for cracks, breaks, and deterioration.
- 4) Check the washer pump electrical connector for voltage. If there is proper voltage (10-14 volts) at the pump, replace the pump and seal.

Washer fluid reservoir has drained while system was not in use.

- 1) Check for cracked or damaged hoses, seals, or reservoir. Replace as necessary.
- 2) If fluid is leaking from washer pump, replace pump and seal.
- 3) Check the washer pump electrical connector for voltage. If voltage exists when the system is not activated, the switch or wiring maybe faulty. Replace as necessary.



372700



372690



372698

Direct
Fit

- Built to Meet or Exceed OE Performance
- All New Windshield Washer Components are Engineering Validated
- One Year Warranty on Parts
- Over 80+ Washer Pumps Available
- All ACI Windshield Washer Designs Pass Multiple Intensive Tests in Our State-of-the-Art R&D Lab
- All ACI Washer Pumps Include All Necessary Mounting Hardware as Required.