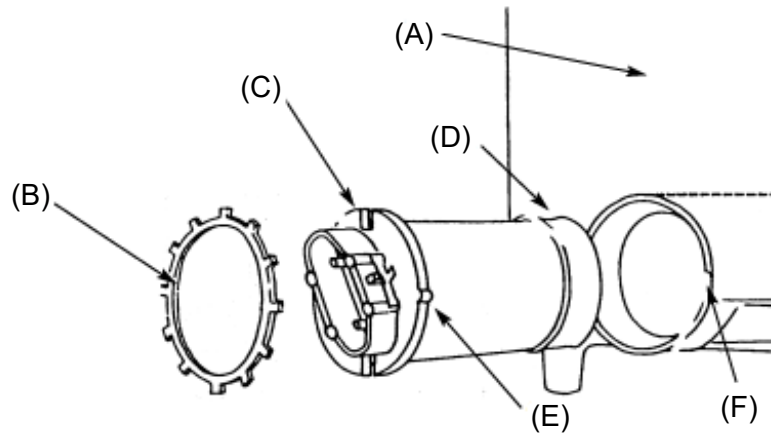


WASHER PUMP REPLACEMENT PROCEDURE



- (A) Tank
- (B) Retaining Ring
- (C) Pump
- (D) Seal
- (E) Pump Alignment Tab
- (F) Tank Alignment Groove

INSTRUCTIONS

Do not use pump without solvent.

- 1) Disconnect electrical and hose connections.
- 2) Drain and remove tank from car.
- 3) Remove retaining ring with small blade screwdriver.
- 4) Remove pump, use pliers if needed.
- 5) Clean pump cavity.
- 6) Lubricate seal with powdered graphite dry lubricant.
- 7) Align tab on pump with groove in tank.
- 8) Push pump in cavity until the seal seats at bottom of tank cavity.
- 9) Install new retaining ring into seat by using a 1" socket.
- 10) Refit tank. Attach electrical and hose connections.
- 11) Fill tank with proper solvent and prime the pump by activating 4 to 6 times.